

# Get the most out of your FEFLOW software

Unlock the full potential of your investment by renewing your Service & Maintenance Agreement (SMA)

## Enhance your capabilities with essential support and updates

A Service & Maintenance Agreement (SMA) provides easy access to the latest software updates, essential ticket-based technical support and valuable training opportunities to enhance your skills. With an active FEFLOW SMA, you get all the Advanced Features outlined on the next page + the bonus modules piMIKE1D (hydrodynamical coupling) and piHMC (hydromechanical coupling).

Your FEFLOW software purchase included a year of service and maintenance. For a fixed annual fee, you can continue to enjoy essential tools and support for optimal software performance.



### Get seamless, personalised technical support

Gain ticket-based access to expert assistance in your language and time zone

[LEARN MORE](#)



### Access the latest software version

Get continuous software updates (service packs), hotfixes and new tools

[LEARN MORE](#)



### Unlock unprecedented features

Enjoy exclusive access to all the FEFLOW Advanced Features

[LEARN MORE](#)

Explore the latest FEFLOW  
features & enhancements



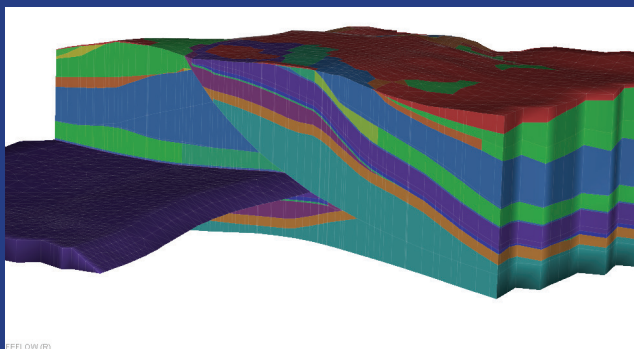
# What's new in FEFLOW 11

Explore the latest FEFLOW features and enhancements

## FEFLOW Advanced Features

### Geomodelling

**Enhanced 3D Layer Configurator:** Experience smoother workflows for building 3D models and additional flexibility to resolve geological pinch-outs (slice-structured, layer-structured and fully/-partially-unstructured meshes).



Resolve geological pinch-outs with the enhanced 3D Layer Configurator

**Structural Model Editor:** Build comprehensive 3D geological models directly in FEFLOW using geological modelling. Integrate borehole data, fault networks and stratigraphy to streamline model setup and eliminate the need for third-party tools.

**New Pinch-Delete Elements tool:** Interactive pinch-out resolution tool based on user selections.

**New Split Layer tool:** Introduce vertical discretisation in pinch-out layers to refine stratigraphy and enhance model resolution.

**New 3D Supermesh Geometric tools:** Enhance your 3D external datasets with new tools that reset topology, individualise components, compute intersections, remove outside components and eliminate small features. Powered by Geode-Solutions, all geometric tools now support operations with different subsets of input data.

### Python

**Python-based interpolation methods:** Integrate external datasets and assign material or boundary values using custom interpolators to simplify sparse-data handling and accelerate model setup.

**3D Processing tools:** Integrate Supermesh geometric tools in Python workflows to automatise model construction and 3D meshing.

### Geothermal

**Open-Loop System Editor in Well Manager:** Model open-loop geothermal systems with precise control over well groups, heat demand and system parameters for improved feasibility studies and design simulations.

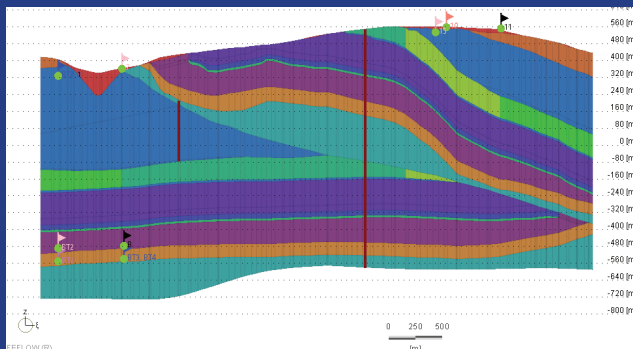
**Better monitoring of geothermal results:** Use the BHE Heat Rate chart to record geothermal power from the system. Define the recording mechanism of open/closed-loop systems within the new Observation Data dialog.

## General improvements

**Improved calculation performance:** Achieve faster runtimes across multiple model types, with up to 50% performance gains.

**New integrated Scripting Editor and console:** Automate complex workflows, customise environments and run Python scripts securely within FEFLOW to streamline modelling and post-processing tasks.

**Boundary conditions and more in cross-section views:** Visualise wells, observation points and boundary conditions directly in cross-sectional views to improve model interpretation and create clear, presentation-ready snapshots.



Visualise boundary conditions and observation points in FEFLOW's cross-sectional views

To renew your SMA or learn about pricing and benefits, contact your **local office**.