

MIKE C-MAP & MIKE ANIMATOR PLUS

Model bathymetries made fast and easy

MIKE C-Map offers **model bathymetries generated fast and easy** from an electronic chart database. MIKE ANIMATOR PLUS turns model results into **amazing 3D video presentations**.

APPLICATIONS

MIKE C-MAP ENHANCED PRODUCTIVITY

The task of establishing the basic model bathymetry is normally a time consuming and expensive part of coastal and marine modelling projects. MIKE C-MAP can reduce this task to minutes.

MIKE C-MAP works with data from digital nautical charts. With the correct charts, you can create a bathymetry of almost any coastal region in the world.

MIKE ANIMATOR PLUS IMPROVED COMMUNICATION

Regardless of how well you undertake your modelling work, clear communication of results is crucial to its value and recognition. MIKE Animator Plus facilitates this communication task.

MIKE Animator Plus is a professional 3D video generating tool for presentation of results from MIKE modelling applications. With MIKE Animator Plus, it is possible to work with result data from MIKE 21, MIKE 3, MIKE FLOOD and MIKE SHE.

FEATURES

MIKE C-MAP

In order to produce your model bathymetries, you need MIKE C-MAP and the relevant data from C-MAP in Norway.

C-MAP provides sea chart information in digital form. This is the data which is turned into your model bathymetries. C-MAP data are available in a number of packages.

MIKE C-MAP is the application which is used to turn C-MAP data into model bathymetries for your MIKE models.

MIKE ANIMATOR PLUS

MIKE Animator Plus includes tools that allow you to:

- Create realistic 3D scenes, including buildings, ships or other solids
- Visualise current patterns, dispersion of heat or contaminants, morphological changes and waves in 3D
- Import and drape images, such as maps or aerial photos on the bathymetry surface
- Produce professional fly-through animations

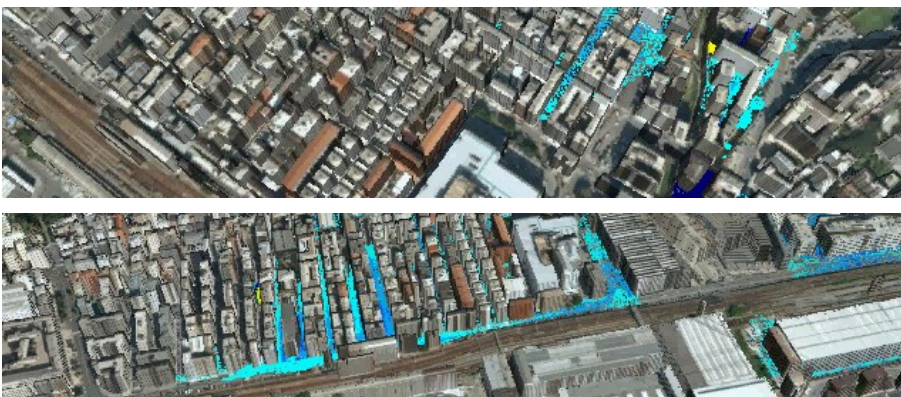
BENEFITS

MIKE C-MAP

If you are a professional MIKE 21 or MIKE 3 modeller facing tight budgets and deadlines, MIKE C-MAP is an almost indispensable tool in your toolbox. For thorough and detailed model studies as well as quick estimates, MIKE C-MAP will enhance your productivity immediately. Manual digitisation of model bathymetries is no longer required.

MIKE ANIMATOR PLUS

The use of MIKE Animator Plus is the best way to facilitate communication and dialogue about your model work. It bridges the gap between specialists and laymen and communicates model studies and ideas efficiently within your team. It provides professional client presentations and facilitates consensus making and dialogue with stakeholders.



This animation shows the propagation of a 200-year return period flood in a densely populated area of the city of Genoa in Northwest Italy. Videos such as this allow you to precisely identify the area (primarily due to the image draping functionality) and easily follow the flooding process through the urban environment.

Contact: mike@dhigroup.com

For more information, visit:
www.mikepoweredbydhi.com